



Location: CMA1b - Oil St Community Liaison Centre

Report on 24-hour TSP monitoring

Action Level ( $\mu\text{g}/\text{m}^3$ ) - 176.7

Limit Level ( $\mu\text{g}/\text{m}^3$ ) - 260

Date	Sampling Time	Weather Condition	Filter paper no.	Filter Weight, g		Elapse Time, hr		Sampling Time, hr	Flow Rate, $\text{m}^3/\text{min}$			Total Volume, $\text{m}^3$	TSP Level, $\mu\text{g}/\text{m}^3$
				Initial	Final	Initial	Final		Initial, $Q_{si}$	Final, $Q_{sf}$	Average		
1-Mar-12	8:00	Cloudy	002204	2.7211	2.8528	585.73	609.72	23.99	1.23	1.18	1.20	1731	76
7-Mar-12	8:00	Cloudy	002219	2.8040	3.0205	612.72	636.72	24.00	1.25	1.18	1.21	1750	124
14-Mar-12	12:10	Cloudy	002291	2.8033	2.9010	639.72	663.16	23.44	1.18	1.23	1.21	1696	56
19-Mar-12	8:00	Fine	002305	2.8089	3.0522	690.17	714.17	24.00	1.22	1.18	1.20	1727	141
24-Mar-12	8:00	Fine	002138	2.7245	2.9724	717.17	741.17	24.00	1.23	1.25	1.24	1787	139

\* Due to lack of electricity supply, the 24 hr-TSPs were rescheduled from 13 Mar 2012 to 14 Mar 2012

Report on 1-hour TSP monitoring

Action Level ( $\mu\text{g}/\text{m}^3$ ) - 320.1

Limit Level ( $\mu\text{g}/\text{m}^3$ ) - 500

Date	Sampling Time	Weather Condition	Filter paper no.	Filter Weight, g		Elapse Time, hr		Sampling Time, hr	Flow Rate, $\text{m}^3/\text{min}$			Total Volume, $\text{m}^3$	TSP Level, $\mu\text{g}/\text{m}^3$
				Initial	Final	Initial	Final		Initial, $Q_{si}$	Final, $Q_{sf}$	Average		
2-Mar-12	8:27	Fine	002278	2.8049	2.8204	609.73	610.72	0.99	1.22	1.24	1.23	73	212
2-Mar-12	9:33	Fine	002280	2.7888	2.8009	610.72	611.72	1.00	1.22	1.29	1.26	75	161
2-Mar-12	10:36	Fine	002257	2.8162	2.8325	611.72	612.72	1.00	1.22	1.27	1.24	75	218
8-Mar-12	8:48	Cloudy	002213	2.7459	2.7574	636.72	637.72	1.00	1.20	1.18	1.19	72	161
8-Mar-12	10:48	Cloudy	002212	2.7325	2.7395	637.72	638.72	1.00	1.23	1.23	1.23	74	95
8-Mar-12	14:25	Cloudy	002315	2.8149	2.8241	638.72	639.72	1.00	1.18	1.18	1.18	71	130
14-Mar-12	8:05	Cloudy	002263	2.8195	2.8303	663.16	664.16	1.00	1.00	1.02	1.01	61	178
14-Mar-12	9:10	Cloudy	002265	2.7926	2.8026	664.16	665.16	1.00	1.23	1.28	1.25	75	133
14-Mar-12	10:55	Cloudy	002292	2.7912	2.7986	665.16	666.16	1.00	1.18	1.18	1.18	71	104
20-Mar-12	8:36	Fine	002458	2.7707	2.7786	714.17	715.17	1.00	1.08	1.20	1.14	69	115
20-Mar-12	9:40	Fine	002454	2.7403	2.7504	715.17	716.17	1.00	1.18	1.22	1.20	72	140
20-Mar-12	10:43	Fine	002451	2.7314	2.7402	716.17	717.17	1.00	1.13	1.13	1.13	68	130
26-Mar-12	9:53	Fine	002367	2.8313	2.8512	741.17	742.17	1.00	1.23	1.27	1.25	75	266
26-Mar-12	11:00	Fine	002361	2.8205	2.8412	742.17	743.17	1.00	1.23	1.25	1.24	74	279
26-Mar-12	12:03	Fine	002362	2.8091	2.8279	743.17	744.17	1.00	1.20	1.20	1.20	72	261



Location: CMA2a - Causeway Bay Community Centre

Report on 24-hour TSP monitoring  
Action Level ( $\mu\text{g}/\text{m}^3$ ) - 169.5  
Limit Level ( $\mu\text{g}/\text{m}^3$ ) - 260

Date	Sampling Time	Weather Condition	Filter paper no.	Filter Weight, g		Elapse Time, hr		Sampling Time, hr	Flow Rate, $\text{m}^3/\text{min}$			Total Volume, $\text{m}^3$	TSP Level, $\mu\text{g}/\text{m}^3$
				Initial	Final	Initial	Final		Initial, $Q_{si}$	Final, $Q_{sf}$	Average		
1-Mar-12	8:00	Cloudy	002208	2.7392	2.8387	10386.88	10410.88	24.00	1.42	1.36	1.39	1999	50
7-Mar-12	8:00	Cloudy	002220	2.8049	3.0196	10413.88	10437.88	24.00	1.51	1.34	1.42	2050	105
13-Mar-12	8:00	Cloudy	002315	2.8177	3.0677	10440.88	10464.88	24.00	1.49	1.47	1.48	2127	118
19-Mar-12	8:00	Fine	002290	2.8105	2.9385	10467.89	10491.89	24.00	1.26	1.29	1.28	1839	70
24-Mar-12	8:00	Fine	002137	2.7211	2.9892	10494.89	10518.90	24.01	1.49	1.46	1.48	2128	126

Report on 1-hour TSP monitoring  
Action Level ( $\mu\text{g}/\text{m}^3$ ) - 323.4  
Limit Level ( $\mu\text{g}/\text{m}^3$ ) - 500

Date	Sampling Time	Weather Condition	Filter paper no.	Filter Weight, g		Elapse Time, hr		Sampling Time, hr	Flow Rate, $\text{m}^3/\text{min}$			Total Volume, $\text{m}^3$	TSP Level, $\mu\text{g}/\text{m}^3$
				Initial	Final	Initial	Final		Initial, $Q_{si}$	Final, $Q_{sf}$	Average		
2-Mar-12	8:16	Fine	002277	2.7816	2.7933	10410.88	10411.88	1.00	1.31	1.31	1.31	79	149
2-Mar-12	9:20	Fine	002279	2.7966	2.8085	10411.88	10412.88	1.00	1.46	1.46	1.46	87	136
2-Mar-12	10:25	Fine	002258	2.8132	2.8222	10412.88	10413.88	1.00	1.46	1.46	1.46	87	103
8-Mar-12	8:30	Cloudy	002215	2.7685	2.7791	10437.88	10438.88	1.00	1.41	1.37	1.39	83	127
8-Mar-12	11:00	Cloudy	002149	2.7532	2.7687	10438.88	10439.88	1.00	1.61	1.61	1.61	97	161
8-Mar-12	14:35	Cloudy	002150	2.7676	2.7830	10439.88	10440.88	1.00	1.49	1.49	1.49	89	173
14-Mar-12	8:23	Cloudy	002264	2.7927	2.8030	10464.89	10465.89	1.00	1.37	1.34	1.36	81	127
14-Mar-12	9:27	Cloudy	002266	2.8212	2.8292	10465.89	10466.89	1.00	1.34	1.34	1.34	81	99
14-Mar-12	10:45	Cloudy	002268	2.8145	2.8194	10466.89	10467.89	1.00	1.39	1.47	1.43	86	57
20-Mar-12	8:20	Fine	002455	2.7416	2.7470	10491.89	10492.89	1.00	1.41	1.41	1.41	85	64
20-Mar-12	9:25	Fine	002459	2.7229	2.7277	10492.89	10493.89	1.00	1.17	1.17	1.17	70	68
20-Mar-12	10:30	Fine	002452	2.7518	2.7610	10493.89	10494.89	1.00	1.31	1.34	1.33	80	116
26-Mar-12	10:08	Fine	002366	2.8103	2.8317	10518.90	10519.90	1.00	1.46	1.51	1.49	89	240
26-Mar-12	11:10	Fine	002370	2.8109	2.8324	10519.90	10520.90	1.00	1.41	1.41	1.41	85	254
26-Mar-12	12:10	Fine	002363	2.8277	2.8526	10520.90	10521.90	1.00	1.51	1.51	1.51	91	275



Location: CMA3a - CWB PRE Site Office Area

Report on 24-hour TSP monitoring  
 Action Level ( $\mu\text{g}/\text{m}^3$ ) - 171  
 Limit Level ( $\mu\text{g}/\text{m}^3$ ) - 260

Date	Sampling Time	Weather Condition	Filter paper no.	Filter Weight, g		Elapse Time, hr		Sampling Time, hr	Flow Rate, $\text{m}^3/\text{min}$			Total Volume, $\text{m}^3$	TSP Level, $\mu\text{g}/\text{m}^3$
				Initial	Final	Initial	Final		Initial, $Q_{si}$	Final, $Q_{sf}$	Average		
1-Mar-12	8:00	Cloudy	002147	2.7298	2.8741	10976.63	11000.63	24.00	1.53	1.57	1.55	2230	65
7-Mar-12	8:00	Cloudy	002154	2.7402	2.9559	11003.63	11027.63	24.00	1.52	1.50	1.51	2175	99
13-Mar-12	8:00	Cloudy	002286	2.7884	3.1057	11062.62	11086.62	24.00	1.50	1.50	1.50	2161	147
19-Mar-12	8:00	Fine	002306	2.8092	3.1135	11089.62	11113.62	24.00	1.65	1.68	1.66	2393	127
26-Mar-12	13:00	Fine	002430	2.7354	2.9873	11143.79	11167.79	24.00	1.65	1.60	1.63	2342	108

\* Due to lack of electricity supply, the 24 hr-1SPs were rescheduled from 24 Mar 2012 to 26 Mar 2012

Report on 1-hour TSP monitoring  
 Action Level ( $\mu\text{g}/\text{m}^3$ ) - 311.3  
 Limit Level ( $\mu\text{g}/\text{m}^3$ ) - 500

Date	Sampling Time	Weather Condition	Filter paper no.	Filter Weight, g		Elapse Time, hr		Sampling Time, hr	Flow Rate, $\text{m}^3/\text{min}$			Total Volume, $\text{m}^3$	TSP Level, $\mu\text{g}/\text{m}^3$
				Initial	Final	Initial	Final		Initial, $Q_{si}$	Final, $Q_{sf}$	Average		
2-Mar-12	13:00	Fine	002241	2.7774	2.7924	11000.63	11001.63	1.00	1.57	1.52	1.54	93	162
2-Mar-12	14:11	Fine	002152	2.7655	2.7804	11001.63	11002.63	1.00	1.52	1.52	1.52	91	164
2-Mar-12	15:16	Fine	002151	2.7591	2.7736	11002.63	11003.63	1.00	1.54	1.54	1.54	93	157
8-Mar-12	8:09	Cloudy	002131	2.7398	2.7560	11059.64	11060.64	1.00	1.47	1.50	1.49	89	182
8-Mar-12	9:21	Cloudy	002281	2.7896	2.8030	11060.64	11061.64	1.00	1.45	1.45	1.45	87	154
8-Mar-12	10:30	Cloudy	002284	2.7967	2.8130	11061.64	11062.64	1.00	1.45	1.45	1.45	87	188
14-Mar-12	13:00	Cloudy	002297	2.7877	2.8043	11086.62	11087.62	1.00	1.53	1.53	1.53	92	181
14-Mar-12	14:35	Cloudy	002310	2.7991	2.8133	11087.62	11088.62	1.00	1.55	1.53	1.54	92	154
14-Mar-12	15:37	Cloudy	002308	2.8175	2.8308	11088.62	11089.62	1.00	1.48	1.50	1.49	89	149
20-Mar-12	9:00	Fine	002440	2.7266	2.7393	11113.62	11114.62	1.00	1.52	1.55	1.53	92	138
20-Mar-12	10:20	Fine	002435	2.7275	2.7416	11114.62	11115.62	1.00	1.62	1.73	1.68	101	140
20-Mar-12	13:00	Fine	002433	2.7205	2.7369	11115.62	11116.62	1.00	1.57	1.57	1.57	94	174
26-Mar-12	9:35	Fine	002372	2.8243	2.8514	11140.80	11141.79	0.99	1.60	1.65	1.63	97	280
26-Mar-12	10:37	Fine	002293	2.7521	2.8110	11141.79	11142.79	1.00	1.60	1.60	1.60	96	301
26-Mar-12	13:00	Fine	002431	2.7458	2.7667	11142.79	11143.79	1.00	1.55	1.63	1.59	95	219



Location: CMA4a - SPCA

Report on 24-hour TSP monitoring

Action Level ( $\mu\text{g}/\text{m}^3$ ) - 171.2  
Limit Level ( $\mu\text{g}/\text{m}^3$ ) - 260

Date	Sampling Time	Weather Condition	Filter paper no.	Filter Weight, g		Elapse Time, hr		Sampling Time, hr	Flow Rate, $\text{m}^3/\text{min}$			Total Volume, $\text{m}^3$	TSP Level, $\mu\text{g}/\text{m}^3$
				Initial	Final	Initial	Final		Initial, $Q_{si}$	Final, $Q_{sf}$	Average		
1-Mar-12	8:00	Cloudy	002148	2.7456	2.8435	14605.30	14629.30	24.00	1.22	1.21	1.22	1755	56
7-Mar-12	8:00	Cloudy	002141	2.7430	2.9071	14632.30	14656.30	24.00	1.25	1.22	1.23	1778	92
13-Mar-12	8:00	Cloudy	002287	2.8107	3.0063	14659.40	14683.40	24.00	1.19	1.22	1.21	1741	112
19-Mar-12	8:00	Fine	002307	2.8150	3.0139	14686.40	14710.40	24.00	1.13	1.13	1.13	1627	122
24-Mar-12	8:00	Fine	002438	2.7141	2.9243	14713.41	14737.41	24.00	1.11	1.11	1.11	1598	132

Report on 1-hour TSP monitoring

Action Level ( $\mu\text{g}/\text{m}^3$ ) - 312.5  
Limit Level ( $\mu\text{g}/\text{m}^3$ ) - 500

Date	Sampling Time	Weather Condition	Filter paper no.	Filter Weight, g		Elapse Time, hr		Sampling Time, hr	Flow Rate, $\text{m}^3/\text{min}$			Total Volume, $\text{m}^3$	TSP Level, $\mu\text{g}/\text{m}^3$
				Initial	Final	Initial	Final		Initial, $Q_{si}$	Final, $Q_{sf}$	Average		
2-Mar-12	13:00	Fine	002242	2.7857	2.7984	14629.30	14630.30	1.00	1.10	1.10	1.10	66	192
2-Mar-12	14:33	Fine	002153	2.7655	2.7690	14630.30	14631.30	1.00	1.07	1.07	1.07	64	54
2-Mar-12	15:38	Fine	002155	2.7408	2.7502	14631.30	14632.30	1.00	1.16	1.16	1.16	69	135
8-Mar-12	8:31	Cloudy	002283	2.8114	2.8207	11656.39	11657.39	1.00	1.19	1.17	1.18	71	131
8-Mar-12	9:43	Cloudy	002282	2.8000	2.8084	11657.39	11658.39	1.00	1.17	1.19	1.18	71	119
8-Mar-12	10:50	Cloudy	002285	2.7960	2.8041	11658.39	11659.39	1.00	1.28	1.28	1.28	77	106
14-Mar-12	13:00	Cloudy	002296	2.8123	2.8202	14683.40	14684.40	1.00	1.23	1.23	1.23	74	107
14-Mar-12	14:20	Cloudy	002311	2.8103	2.8172	14684.40	14685.40	1.00	1.23	1.23	1.23	74	94
14-Mar-12	15:20	Cloudy	002309	2.7999	2.8074	14685.40	14686.40	1.00	1.23	1.23	1.23	74	102
20-Mar-12	8:50	Fine	002441	2.7375	2.7439	14710.40	14711.40	1.00	1.07	1.10	1.09	65	98
20-Mar-12	10:02	Fine	002437	2.7142	2.7235	14711.40	14712.40	1.00	1.10	1.05	1.07	64	144
20-Mar-12	13:00	Fine	002436	2.7284	2.7371	14712.40	14713.40	1.00	1.10	1.13	1.12	67	130
26-Mar-12	8:05	Fine	002371	2.7979	2.8117	14737.42	14738.42	1.00	1.11	1.11	1.11	66	208
26-Mar-12	9:15	Fine	002374	2.7935	2.8064	14738.42	14739.42	1.00	1.11	1.11	1.11	66	194
26-Mar-12	10:18	Fine	002375	2.7946	2.8068	14739.42	14740.42	1.00	1.13	1.16	1.15	69	177



Location: CMA5a - Children Garden opposite to Pedestrian Plaza

Report on 24-hour TSP monitoring

Action Level ( $\mu\text{g}/\text{m}^3$ ) - 181  
 Limit Level ( $\mu\text{g}/\text{m}^3$ ) - 260

181  
 260

Date	Sampling Time	Weather Condition	Filter paper no.	Filter Weight, g		Elapse Time, hr		Sampling Time, hr	Flow Rate, $\text{m}^3/\text{min}$			Total Volume, $\text{m}^3$	TSP Level, $\mu\text{g}/\text{m}^3$
				Initial	Final	Initial	Final		Initial, $Q_{si}$	Final, $Q_{sf}$	Average		
1-Mar-12	8:00	Cloudy	002032	2.7753	2.8791	15602.42	15626.42	24.00	1.23	1.23	1.23	1778	58
7-Mar-12	8:00	Cloudy	002249	2.7949	2.9675	15629.42	15653.42	24.00	1.09	1.10	1.10	1578	109
13-Mar-12	8:00	Cloudy	002275	2.7982	2.9884	15656.42	15680.43	24.01	1.21	1.21	1.21	1740	109
19-Mar-12	8:00	Fine	002295	2.7992	3.0295	15683.43	15707.42	23.99	1.20	1.25	1.23	1766	130
24-Mar-12	8:00	Fine	002379	2.8013	2.9865	15710.42	15734.43	24.01	1.10	1.15	1.13	1621	114

Report on 1-hour TSP monitoring

Action Level ( $\mu\text{g}/\text{m}^3$ ) - 332  
 Limit Level ( $\mu\text{g}/\text{m}^3$ ) - 500

Date	Sampling Time	Weather Condition	Filter paper no.	Filter Weight, g		Elapse Time, hr		Sampling Time, hr	Flow Rate, $\text{m}^3/\text{min}$			Total Volume, $\text{m}^3$	TSP Level, $\mu\text{g}/\text{m}^3$
				Initial	Final	Initial	Final		Initial, $Q_{si}$	Final, $Q_{sf}$	Average		
2-Mar-12	13:00	Fine	002243	2.7775	2.7847	15626.42	15627.42	1.00	0.98	0.98	0.98	59	122
2-Mar-12	14:16	Fine	002245	2.7793	2.7876	15627.42	15628.42	1.00	1.14	1.14	1.14	69	121
2-Mar-12	15:26	Fine	002247	2.7677	2.7766	15628.42	15629.42	1.00	1.20	1.20	1.20	72	124
8-Mar-12	8:30	Cloudy	002276	2.7716	2.7809	15653.42	15654.42	1.00	1.23	1.23	1.23	74	126
8-Mar-12	9:33	Cloudy	002272	2.7942	2.8024	15654.42	15655.42	1.00	1.23	1.26	1.25	75	110
8-Mar-12	10:38	Cloudy	002270	2.7972	2.8049	15655.42	15656.42	1.00	1.23	1.23	1.23	74	104
14-Mar-12	8:32	Cloudy	002229	2.8043	2.8137	15680.43	15681.43	1.00	1.21	1.21	1.21	73	130
14-Mar-12	9:41	Cloudy	002226	2.7771	2.7855	15681.43	15682.43	1.00	1.21	1.21	1.21	73	116
14-Mar-12	10:45	Cloudy	002236	2.7880	2.7968	15682.43	15683.43	1.00	1.21	1.21	1.21	73	121
20-Mar-12	9:55	Fine	002384	2.8075	2.8166	15707.42	15708.42	1.00	1.20	1.20	1.20	72	126
20-Mar-12	11:00	Fine	002382	2.8132	2.8206	15708.42	15709.42	1.00	1.09	1.09	1.09	66	113
20-Mar-12	13:00	Fine	002380	2.7964	2.8077	15709.42	15710.42	1.00	1.20	1.25	1.23	74	153
26-Mar-12	10:23	Fine	002391	2.8048	2.8226	15734.43	15735.43	1.00	1.04	1.04	1.04	62	285
26-Mar-12	13:40	Fine	002413	2.8057	2.8195	15735.43	15736.43	1.00	1.04	1.01	1.03	62	224
26-Mar-12	14:40	Fine	002415	2.8059	2.8186	15736.43	15737.43	1.00	1.23	1.26	1.24	75	170



Location: MA1e - International Finance Centre (Eastern Wing)

Report on 24-hour TSP monitoring

Action Level ( $\mu\text{g}/\text{m}^3$ ) - 173.4

Limit Level ( $\mu\text{g}/\text{m}^3$ ) - 260

Date	Sampling Time	Weather Condition	Filter paper no.	Filter Weight, g		Elapse Time, hr		Sampling Time, hr	Flow Rate, $\text{m}^3/\text{min}$			Total Volume, $\text{m}^3$	TSP Level, $\mu\text{g}/\text{m}^3$
				Initial	Final	Initial	Final		Initial, $Q_{si}$	Final, $Q_{sf}$	Average		
1-Mar-12	8:00	Cloudy	002166	2.7780	2.8571	8277.34	8301.34	24.00	1.27	1.26	1.27	1827	43
7-Mar-12	8:00	Cloudy	002239	2.8094	2.9529	8304.34	8328.35	24.01	1.29	1.27	1.28	1846	78
13-Mar-12	8:00	Cloudy	002232	2.8032	2.9862	8331.36	8355.36	24.00	1.27	1.27	1.27	1830	100
19-Mar-12	8:00	Fine	002303	2.7878	2.9762	8358.36	8382.36	24.00	1.26	1.27	1.27	1822	103
24-Mar-12	8:00	Fine	002445	2.7387	2.9792	8385.36	8409.37	24.01	1.30	1.32	1.31	1883	128

Report on 1-hour TSP monitoring

Action Level ( $\mu\text{g}/\text{m}^3$ ) - 325.1

Limit Level ( $\mu\text{g}/\text{m}^3$ ) - 500

Date	Sampling Time	Weather Condition	Filter paper no.	Filter Weight, g		Elapse Time, hr		Sampling Time, hr	Flow Rate, $\text{m}^3/\text{min}$			Total Volume, $\text{m}^3$	TSP Level, $\mu\text{g}/\text{m}^3$
				Initial	Final	Initial	Final		Initial, $Q_{si}$	Final, $Q_{sf}$	Average		
2-Mar-12	8:13	Fine	002164	2.7481	2.7553	8301.34	8302.34	1.00	1.26	1.26	1.26	76	95
2-Mar-12	9:17	Fine	002162	2.7297	2.7382	8302.34	8303.34	1.00	1.26	1.26	1.26	76	112
2-Mar-12	10:25	Fine	002237	2.7748	2.7816	8303.34	8304.34	1.00	1.26	1.26	1.26	76	90
8-Mar-12	8:29	Cloudy	002251	2.7780	2.7879	8328.35	8329.35	1.00	1.27	1.27	1.27	76	130
8-Mar-12	9:37	Cloudy	002253	2.8080	2.8168	8329.35	8330.35	1.00	1.27	1.27	1.27	76	115
8-Mar-12	10:41	Cloudy	002234	2.7926	2.7998	8330.35	8331.35	1.00	1.27	1.27	1.27	76	94
14-Mar-12	9:25	Cloudy	002298	2.7917	2.7995	8355.36	8356.36	1.00	1.30	1.32	1.31	78	99
14-Mar-12	10:28	Cloudy	002222	2.7877	2.7959	8356.36	8357.36	1.00	1.27	1.27	1.27	76	107
14-Mar-12	13:00	Cloudy	002224	2.7776	2.7857	8357.36	8358.36	1.00	1.27	1.27	1.27	76	106
20-Mar-12	8:46	Fine	002126	2.7735	2.7828	8382.36	8383.36	1.00	1.27	1.27	1.27	76	122
20-Mar-12	9:51	Fine	002450	2.7501	2.7591	8383.36	8384.36	1.00	1.27	1.27	1.27	76	118
20-Mar-12	13:00	Fine	002446	2.7338	2.7446	8384.36	8385.36	1.00	1.27	1.27	1.27	76	142
26-Mar-12	9:10	Fine	002302	2.7909	2.7980	8409.37	8410.37	1.00	1.27	1.27	1.27	76	93
26-Mar-12	11:00	Fine	002353	2.8120	2.8196	8410.37	8411.37	1.00	1.22	1.22	1.22	73	104
26-Mar-12	13:00	Fine	002411	2.8224	2.8346	8411.37	8412.37	1.00	1.13	1.13	1.13	68	180



Location: MA1w - International Finance Centre (Western Wing)

Report on 24-hour TSP monitoring

Action Level ( $\mu\text{g}/\text{m}^3$ ) - 173.4

Limit Level ( $\mu\text{g}/\text{m}^3$ ) - 260

Date	Sampling Time	Weather Condition	Filter paper no.	Filter Weight, g		Elapse Time, hr		Sampling Time, hr	Flow Rate, $\text{m}^3/\text{min}$			Total Volume, $\text{m}^3$	TSP Level, $\mu\text{g}/\text{m}^3$
				Initial	Final	Initial	Final		Initial, $Q_{si}$	Final, $Q_{sf}$	Average		
1-Mar-12	8:00	Cloudy	002165	2.7662	2.8547	11405.69	11429.69	24.00	1.36	1.48	1.42	2045	43
7-Mar-12	8:00	Cloudy	002240	2.7883	2.9477	11432.69	11456.70	24.01	1.44	1.54	1.49	2145	74
13-Mar-12	8:00	Cloudy	002231	2.7940	2.9855	11459.71	11483.71	24.00	1.38	1.56	1.47	2115	91
19-Mar-12	8:00	Fine	002304	2.7832	2.8574	11486.71	11510.71	24.00	1.42	1.40	1.41	2025	37
24-Mar-12	8:00	Fine	002444	2.7530	3.0547	11513.71	11537.72	24.01	1.49	1.53	1.51	2181	138

Report on 1-hour TSP monitoring

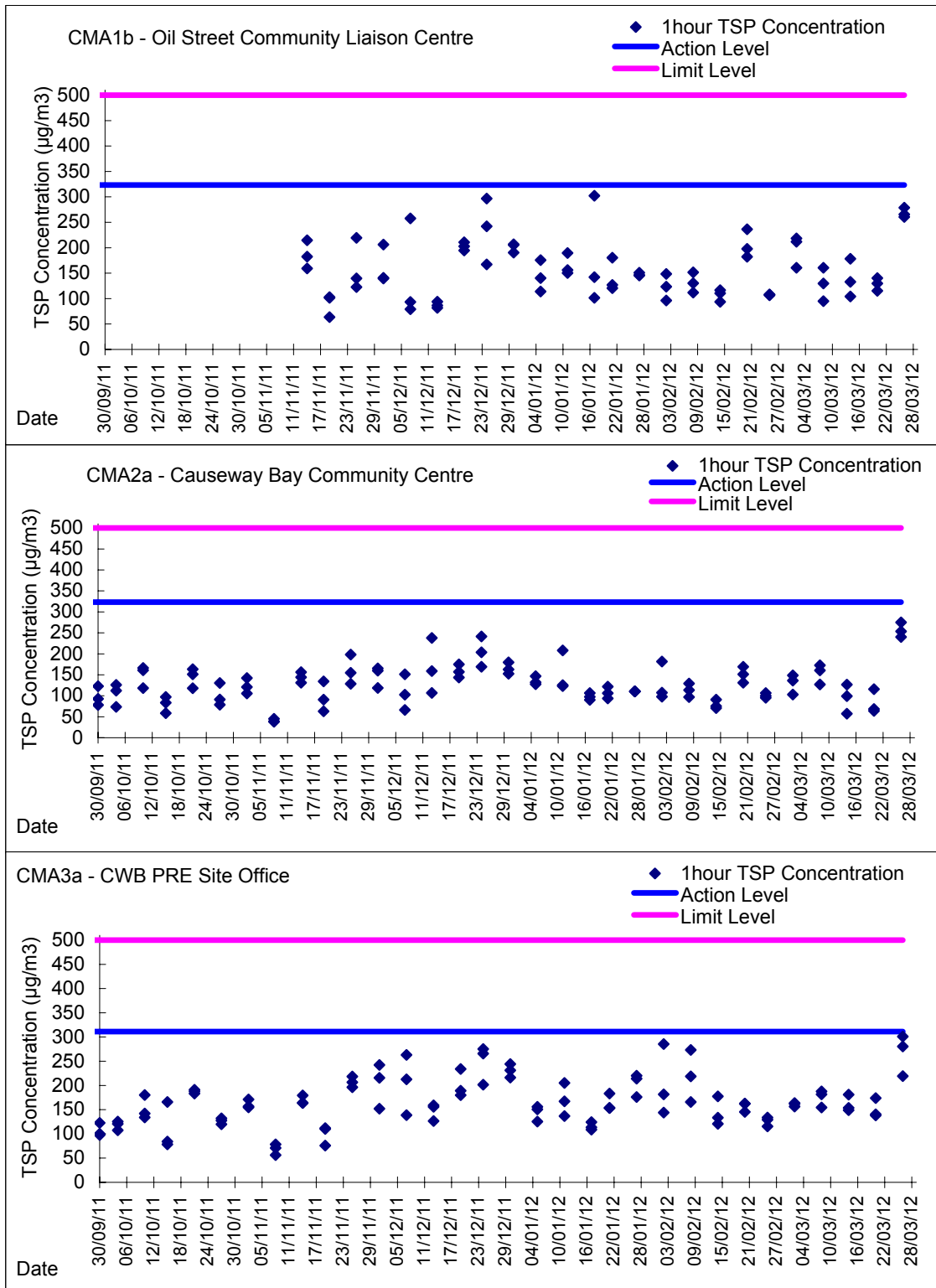
Action Level ( $\mu\text{g}/\text{m}^3$ ) - 325.1

Limit Level ( $\mu\text{g}/\text{m}^3$ ) - 500

Date	Sampling Time	Weather Condition	Filter paper no.	Filter Weight, g		Elapse Time, hr		Sampling Time, hr	Flow Rate, $\text{m}^3/\text{min}$			Total Volume, $\text{m}^3$	TSP Level, $\mu\text{g}/\text{m}^3$
				Initial	Final	Initial	Final		Initial, $Q_{si}$	Final, $Q_{sf}$	Average		
2-Mar-12	8:20	Fine	002163	2.7500	2.7610	11429.69	11430.69	1.00	1.44	1.44	1.44	86	127
2-Mar-12	9:26	Fine	002161	2.7370	2.7471	11430.69	11431.69	1.00	1.42	1.44	1.43	86	118
2-Mar-12	10:31	Fine	002238	2.7801	2.7884	11431.69	11432.69	1.00	1.44	1.44	1.44	86	96
8-Mar-12	8:37	Cloudy	002251	2.7780	2.7879	11456.70	11457.70	1.00	1.45	1.47	1.46	88	113
8-Mar-12	9:44	Cloudy	002235	2.7951	2.8050	11458.70	11459.70	1.00	1.38	1.38	1.38	83	120
8-Mar-12	10:48	Cloudy	002233	2.7893	2.7987	11459.70	11460.70	1.00	1.36	1.31	1.34	80	117
14-Mar-12	9:14	Cloudy	002269	2.8088	2.8172	11483.71	11484.71	1.00	1.45	1.45	1.45	87	97
14-Mar-12	10:18	Cloudy	002225	2.7740	2.7840	11484.71	11485.71	1.00	1.45	1.47	1.46	88	114
14-Mar-12	13:00	Cloudy	002223	2.7920	2.8021	11485.71	11486.71	1.00	1.43	1.43	1.43	86	118
20-Mar-12	9:00	Fine	002449	2.7367	2.7472	11510.71	11511.71	1.00	1.46	1.46	1.46	88	120
20-Mar-12	10:03	Fine	002448	2.7381	2.7496	11511.71	11512.71	1.00	1.42	1.37	1.40	84	137
20-Mar-12	13:00	Fine	002447	2.7173	2.7314	11512.71	11513.71	1.00	1.40	1.31	1.35	81	174
26-Mar-12	9:15	Fine	002301	2.7861	2.7990	11537.72	11538.72	1.00	1.35	1.40	1.38	83	156
26-Mar-12	11:00	Fine	002352	2.7748	2.7850	11538.72	11539.72	1.00	1.35	1.35	1.35	81	126
26-Mar-12	13:00	Fine	002410	2.8174	2.8294	11539.72	11540.72	1.00	1.47	1.49	1.48	89	135

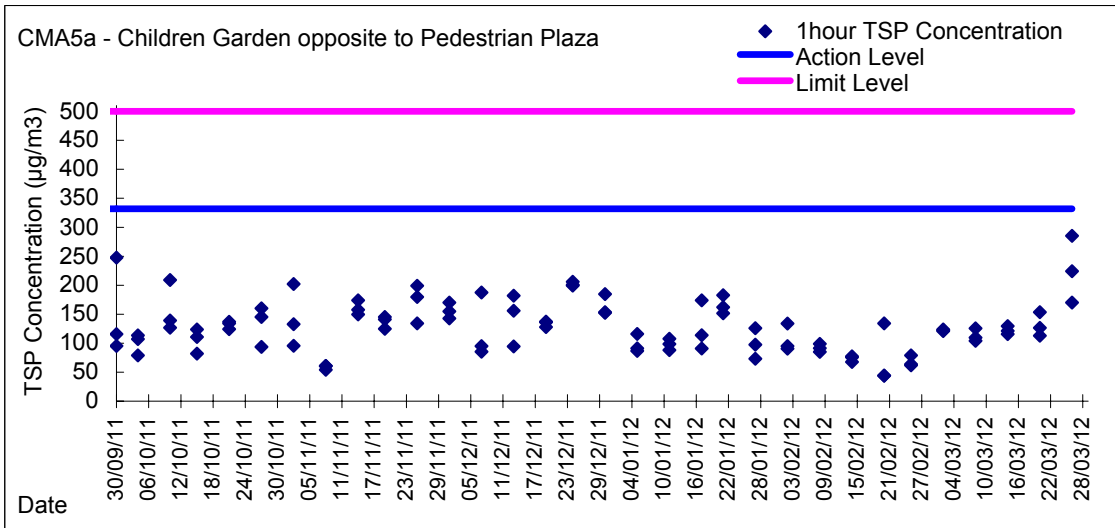
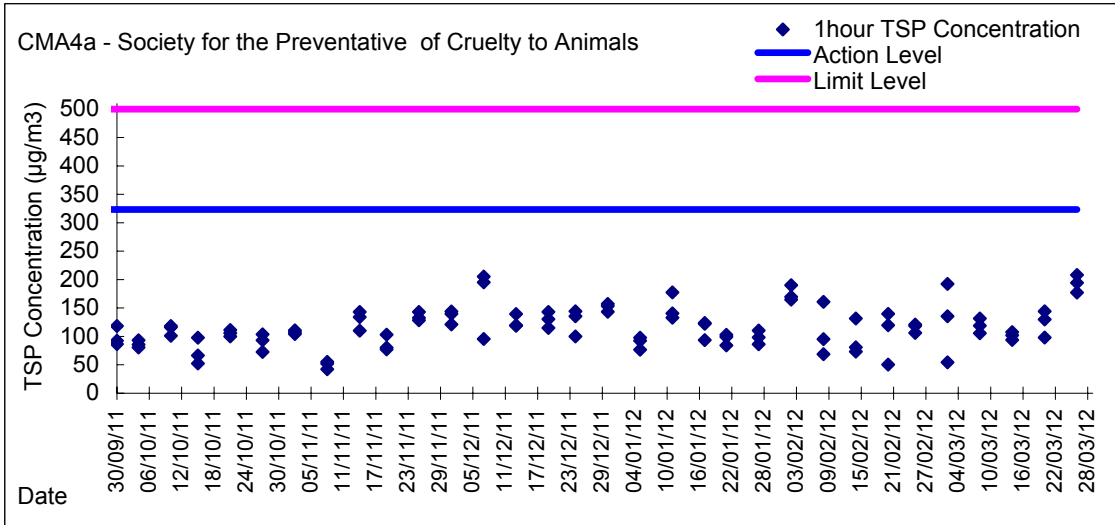


Graphic Presentation of 1 hour TSP Result

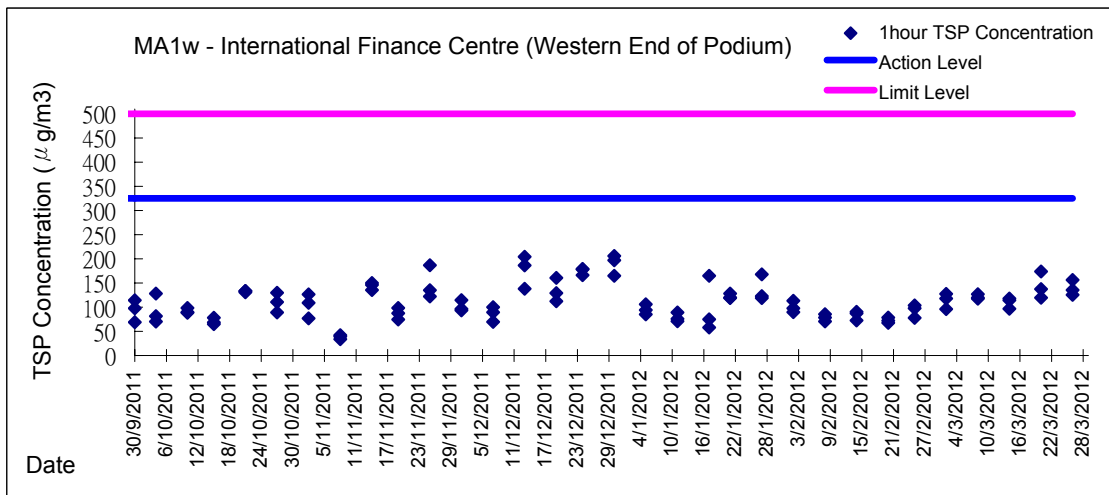
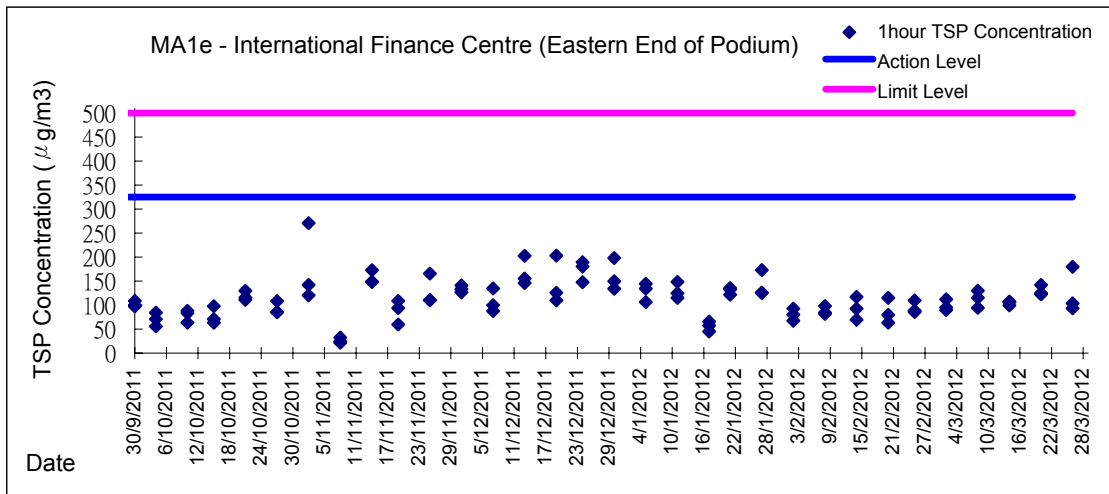




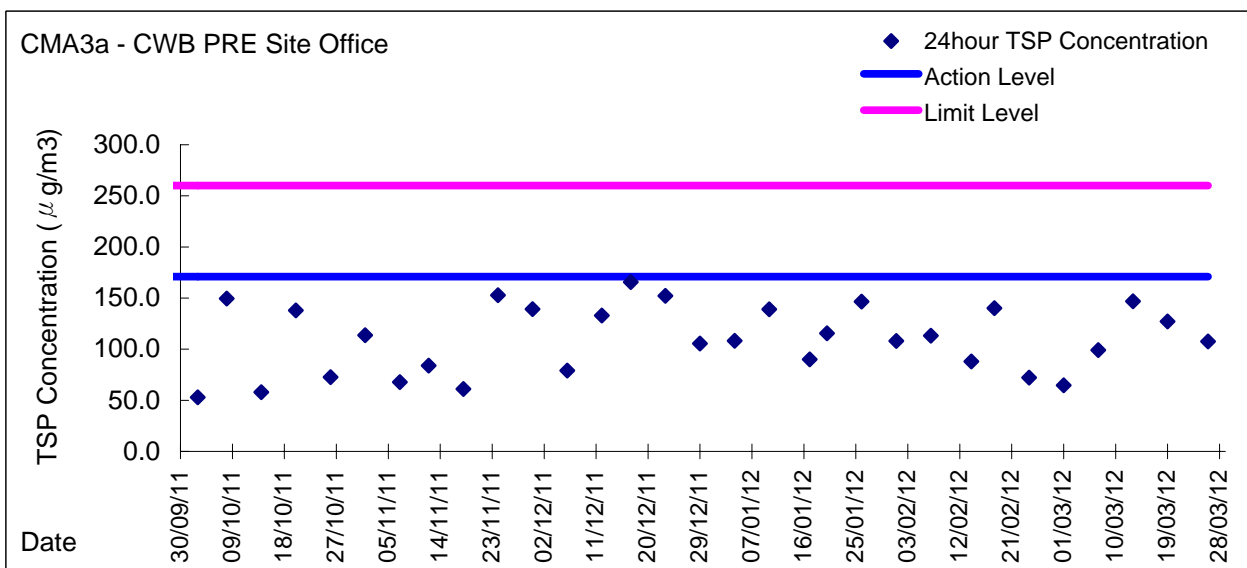
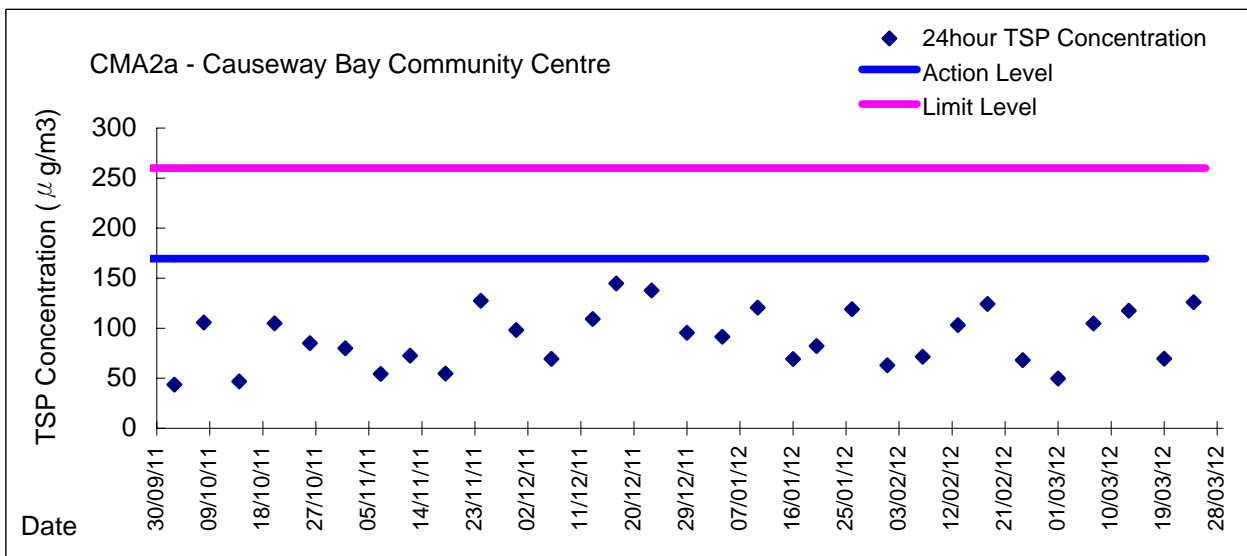
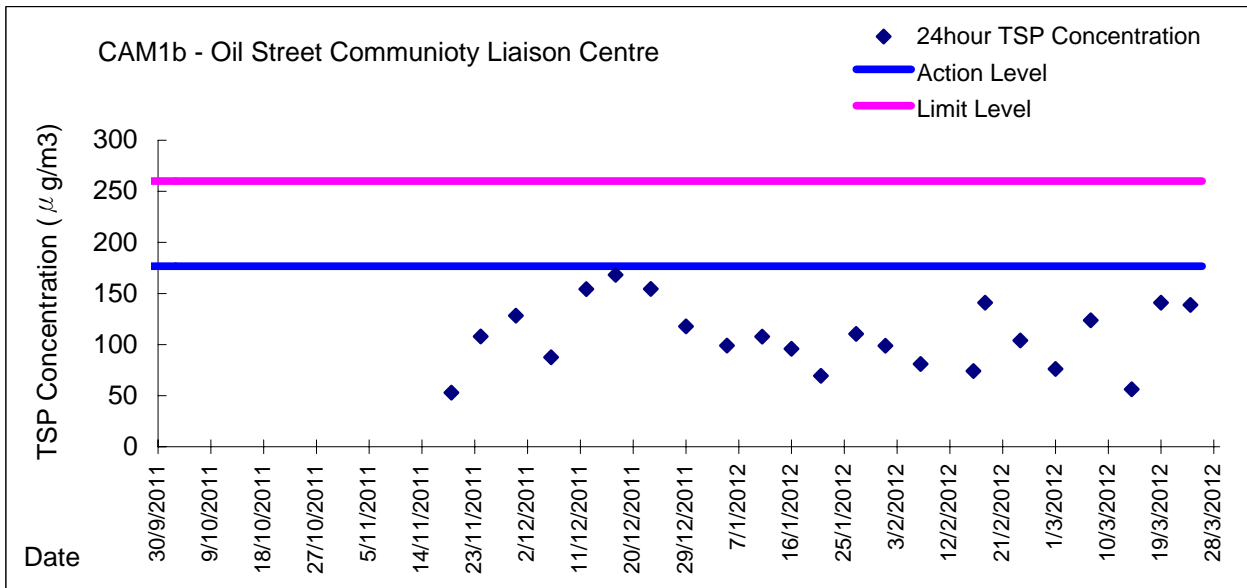
Graphic Presentation of 1 hour TSP Result



Graphic Presentation of 1 hour TSP Result

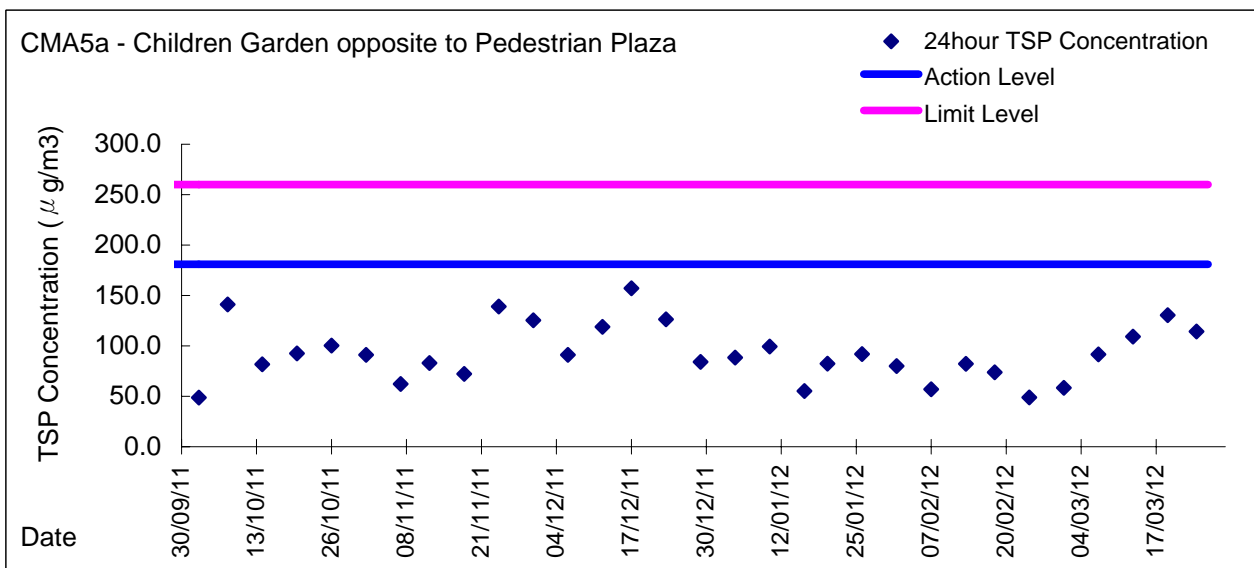
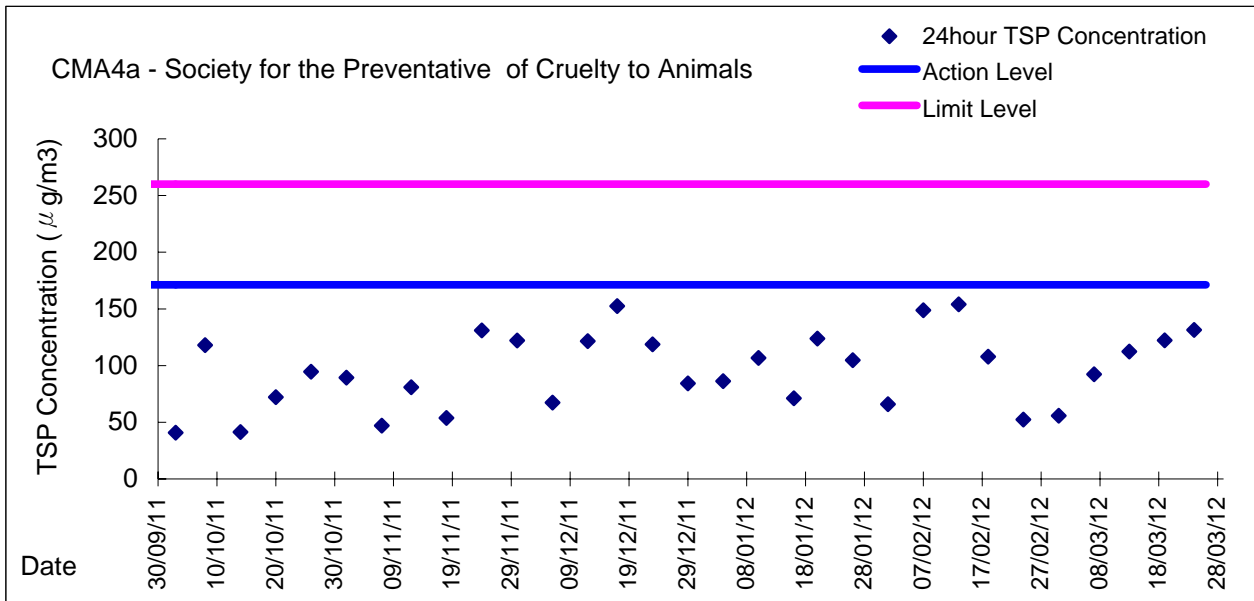


**Graphic Presentation of 24 hour TSP Result**





Graphic Presentation of 24 hour TSP Result



**Graphic Presentation of 24 hour TSP Result**

